

An innovative, versatile system for the security of persons within crash-endangered areas



Characteristics:

- Horizontal profil security system examined according to DIN EN 795 - class D
- Simultaneous use of 6 persons possible
- Useable with connecting devices with integrated drop absorber according to DIN EN 355 and DIN EN354
- Useable with a simple and inexpensive runner or
- Useable with an removable runner, which is removable in any place
- Largest distance between clamps: 6 m
- Rail can support forces up to 100 kg take up (without lasting deformation) - hand rail effect
- No squeezing the rail in the "sliding mounting plates", thus expansions are compensated
- By the sliding mounting plates only small load effect arises into the building
- Runners slide with low-friction also in the elbows
- Installation in any position (see sample applications):
 - Installation over head
 - Installation at the soil
 - Installation as hand rail
- Completely manufactured vertical and horizontal elbows with a radius of $R = 80 \text{ mm}$
- The rail is also able to lay in large elbows
- Locking device is integrated in the rail conclusion
- Runners, rail and clamps are isolated to each other
- Material of the construction units is exclusive pickled high-grade steel and anodizes aluminium.

Horizontal safeguard rail

In lengths of 200 - 6000 mm available. Maximum mounting distance 6000 mm

High-alloyed steel pickled

Weight: 2,7 kg/1 m

Order No. 10636

Fixed length 6000 mm

Weight: 16,2 kg/piece

Order No. 10637



Horizontal safeguard rail

For safeguard rail 17488 and 10636 standing or lying

In lengths of max. 5600 mm

Minimum radius R = 2000 mm

Addition per bend

Order No. 10639



Butt joint

To connecting the individual pieces of rail

Aluminium anodizes

Weight: 0,5 kg/1 piece

Order No. 10640



Rail conclusion, without exit

End stop, in order to prevent an inadvertent driving out of the runner.

High-alloyed steel pickled/Aluminium anodizes

Weight: 0,4 kg/1 piece

Order No. 10643



Rail conclusion, with exit

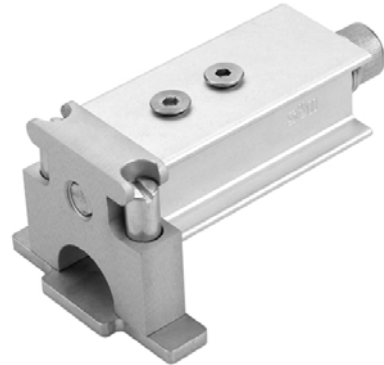
End stop, in order to prevent an inadvertent driving out of the runner.
Take out the runner by pressing of the opening mechanism

Note - not for role runners suitably!

High-alloyed steel pickled/Aluminium anodizes

Weight: 0,6 kg/1 piece

Order No. 10644



Bow horizontal

For horizontal deviation as hitting a corner by-pass, R = 80 mm, 90°.
On request any angles of 30 - 150° are available.

Aluminium anodizes

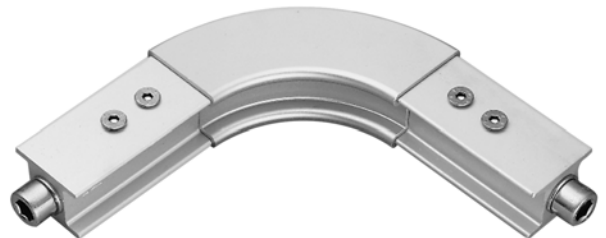
Weight: 0,9 kg/1 piece

Order No. 10645

Version from 30 – 150°

Weight: var.

Order No. 10646



Bow vertical

For vertical deviation as hitting a corner by-pass, R = 80 mm, 90°.
On request any angles of 30 - 150° are available.

Aluminium anodizes

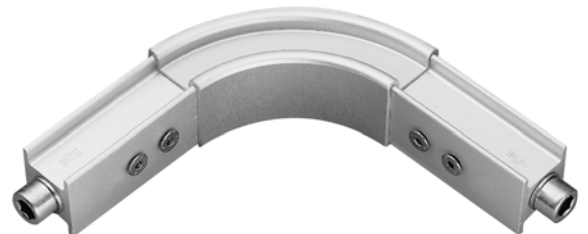
Weight: 0,9 kg/1 piece

Order No. 10647

Version from 30 – 150°

Weight: var.

Order No. 10648



Switch horizontal

For a secured direction change after 2 sides. The rails must stand
thereby in the 90°-angle to each other.

High-alloyed steel pickled/Aluminium anodizes

Weight: 2,7 kg/1 piece

Order No. 10653



Switch horizontal with clamp

For a secured direction change after 2 sides. The rails must stand thereby in the 90°-angle to each other.
Is used if the fastening point is exactly under the switch. Problem-free assembly in connection with clamp (order no. 10641) possible.

High-alloyed steel pickled/Aluminium anodizes

Weight: 3,2 kg/1 piece
Order No. 10743

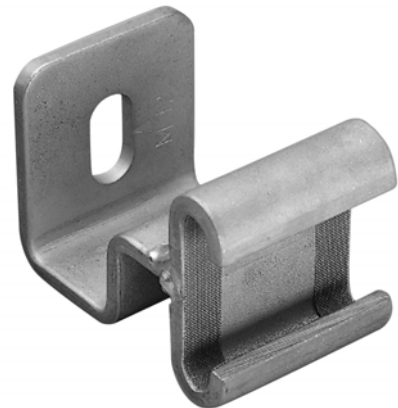


Clamp

With gliding plane from Teflon.
The rail slides freely into the Clamps (is subject to no squeezing).
For fixing bolts M 12, area for screwing parallel to the rail admission

High-alloyed steel pickled

Weight: 0,4 kg/1 piece
Order No. 10641

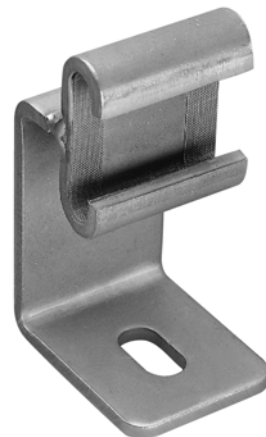


Clamp

With gliding plane from Teflon.
The rail slides freely into the Clamps (is subject to no squeezing).
For fixing bolts M 12, area for screwing right-angled to the rail admission

High-alloyed steel pickled

Weight: 0,4 kg/1 piece
Order No. 10642



Clamp

With gliding plane from Teflon.
For assembly over head, fixing bolts M 12. Discharge "L" = max. 200 mm. The rail slides freely into the Clamps (is subject to keener squeezing). Indicate discharge "L" when ordering please.

High-alloyed steel pickled

Weight: 0,4 kg/1 piece
Order No. 10754



Clamp

With gliding plane from Teflon.
For assembly over head, fixing bolts M 12. Discharge "L" = max. 200 mm. The rail slides freely into the Clamps (is subject to keener squeezing). Indicate discharge "L" when ordering please.

High-alloyed steel pickled

Weight: 0,4 kg/1 piece
Order No. 10755



Befestigungsschelle

With gliding plane from Teflon.
The rail slides freely into the Clamps (is subject to no squeezing).
Discharge "L" = 80 - 200 mm. Completely with all fastening parts.
Indicate discharge "L" when ordering please.

High-alloyed steel pickled

Weight: var.
Order No. 10657



Universal Bracket

As sub-construction for Clamp. Completely with fastening parts for the Clamp.

For fastening on concrete, special constructions or for different groundings available, please contact us

Steel hot-dip galvanizes

Weight: variable

h = 250 mm Order-Nr. 11188
h = 350 mm Order-Nr. 11189
h = 450 mm Order-Nr. 11190



Runner, not for opening

With sliding inserts (from PP) and hanging up eye.

High-alloyed steel pickled

Weight: 0,4 kg/1 piece

Order No. 10649



Runner, for opening

With sliding inserts (from PP) and hanging up eye.
Can be taken up and/or removed at any place.

High-alloyed steel pickled

Weight: 0,6 kg/1 piece

Order No. 10650



Role Runner

To the use of elevator safeguard equipment at the profile safeguard rail suitably. The rail must be installed always thereby over head.
With hanging up eye.

Note: Use not with close bows possible!

High-alloyed steel pickled

Weight: 1,3 kg/1 piece

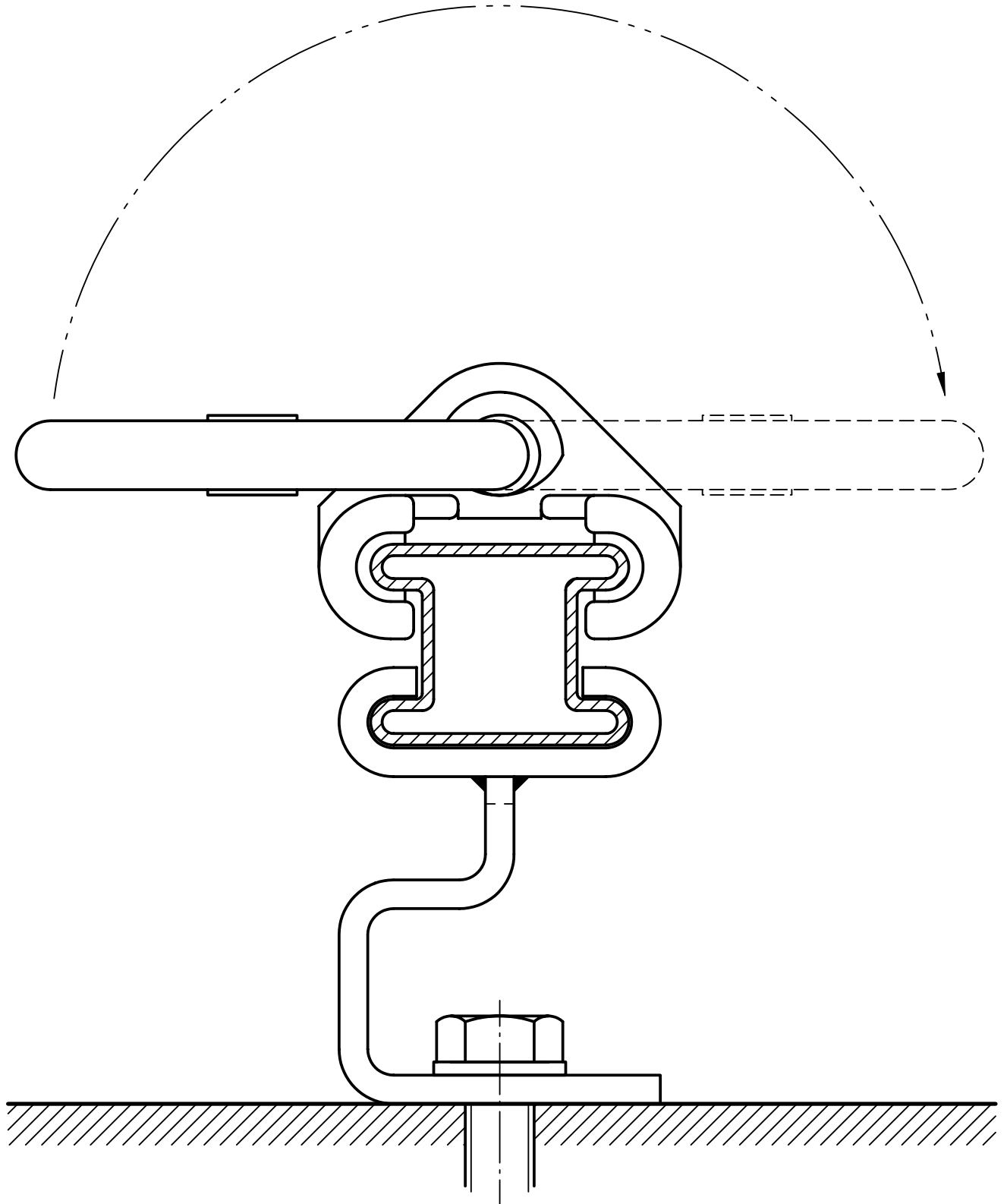
Order No. 10654

Special versions of the role runner on request!



Profile security system rail lying with Clamp 10641

Scale 1:1



Profile security system rail lying with Clamp 10642

Scale 1:1

